

# HARKEN®

## INSTRUCTIONS

### T27KIT

Fits G222B Small Boat Genoa Lead, T27 and T27.HL Midrange Traveler Cars

N15W24983 Bluemound Rd. • Pewaukee, WI 53072 U.S.A.

Telephone: (262) 691-3320 • Fax: (262) 701-5780

Web: [www.harken.com](http://www.harken.com) • Email: [harken@harken.com](mailto:harken@harken.com)








**Strictly follow all instructions to avoid an accident, damage to your vessel, personal injury or death. See [www.harken.com/manuals](http://www.harken.com/manuals) for additional safety information.**

### Parts List

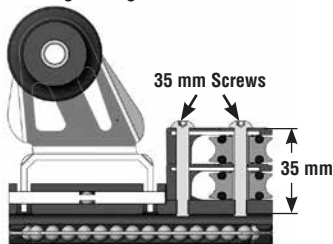
No.	Item name	Qty	Part No.
1	Sideplate (Control) 225 mm	4	H-52104
2	Inner Race—225 mm ESP	4	H-51797
3	Sheave Assembly 225 mm ESP	4	H-51799
4	Screw M5X35MM Socket Buttonhead	8	HFS355
5	Dead End	2	H-51809
6	Blue Loctite® (Not Shown)	1	833

				
--	---	---	---	---

### 35 mm Screw Length

The screws provided are long enough to use two sheaves in a G22 genoa lead.



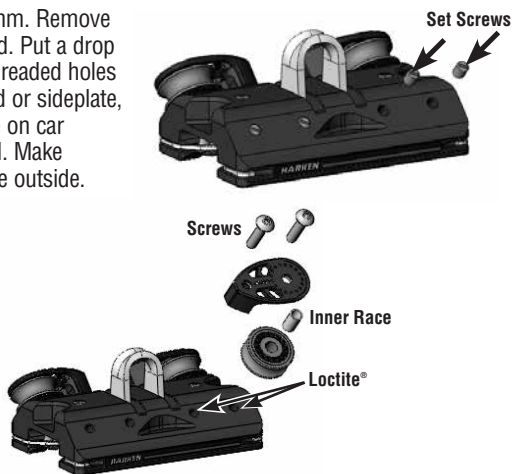
Series or Part No.	Configuration	5 mm Screw Length		
		In	mm	
<b>Cars</b>				
T27 MR	Sheave	3/4	20	HFS358
	Sheave Dead End	3/4	20	HFS358
<b>Genoa Leads</b>				
G272B	Single Sheave for 2:1	3/4	20	HFS358
	Single Sheave and Dead End for 3:1	1 3/8	35	
G224B	Double Sheave for 4:1	1 3/8	35	HFS355

### Shorten Screw Length

Refer to chart for correct length. To shorten screw, find/purchase a 5 mm nut and screw it onto the screw so it will be on the side that will be retained. Cut the screw and clean up threads by removing nut. Remove any burrs using a file.

### Install Sheave or Dead End

Shorten screw to 20 mm. Remove set screws or dead end. Put a drop of blue Loctite® into threaded holes in car. Mount dead end or sideplate, sheave, and inner race on car using screws provided. Make sure sheaves are to the outside.

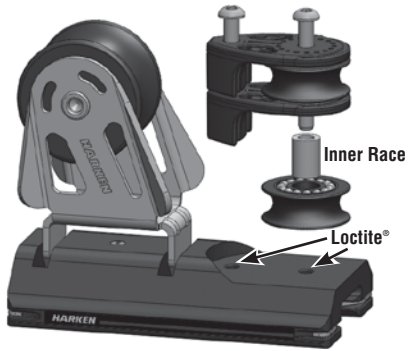


**Caution! Do not stack two blocks on mainsheet traveler cars. Do not stack dead end on top of sheave. This will weaken the control assembly and can lead to a blocks or dead end breaking, possibly resulting in injury and damage to equipment.**

**Tip: Capture control line eyesplice onto dead end before installing.**

## Sheave or Dead End Assembly on G27 Genoa Lead Car

Remove other hardware.  
Put a drop of blue Loctite® into threaded holes in car.  
Mount combination of two sheave assemblies or dead end/sheave assembly using full-length 35 mm screws.  
Make sure to use inner race with sheave assembly.



**Tip:** Capture control line eyesplice onto dead end before installing.

For reeving instructions go to:

## Inspect

Frequently inspect line for deterioration and replace as necessary. Check block for signs of wear.

## Maintenance

**Traveler or Genoa Lead Car:** Clean by frequently flushing with fresh water. Periodically clean car by squirting a detergent/water solution into center openings. Roll car back and forth to distribute evenly then flush bearings with fresh water.

Do not use spray lubricants because ball bearings may skid not roll. Apply one to two drops of McLube® OneDrop™ to ball contact surfaces of track. Roll car back and forth through OneDrop™ several times to distribute onto bearings. Wipe remaining OneDrop™ off track. OneDrop™ is preferred but you can also use one to two drops of a light machine oil. Too much oil attracts dirt.

**Track:** Clean with detergent and water.

**IMPORTANT!** Exposure to some teak cleaners and other caustic solutions can result in discoloration of part and is not covered under the Harken warranty.



## Warranty

For additional safety, maintenance and warranty information see [www.harken.com/manuals](http://www.harken.com/manuals) or the Harken® catalog.